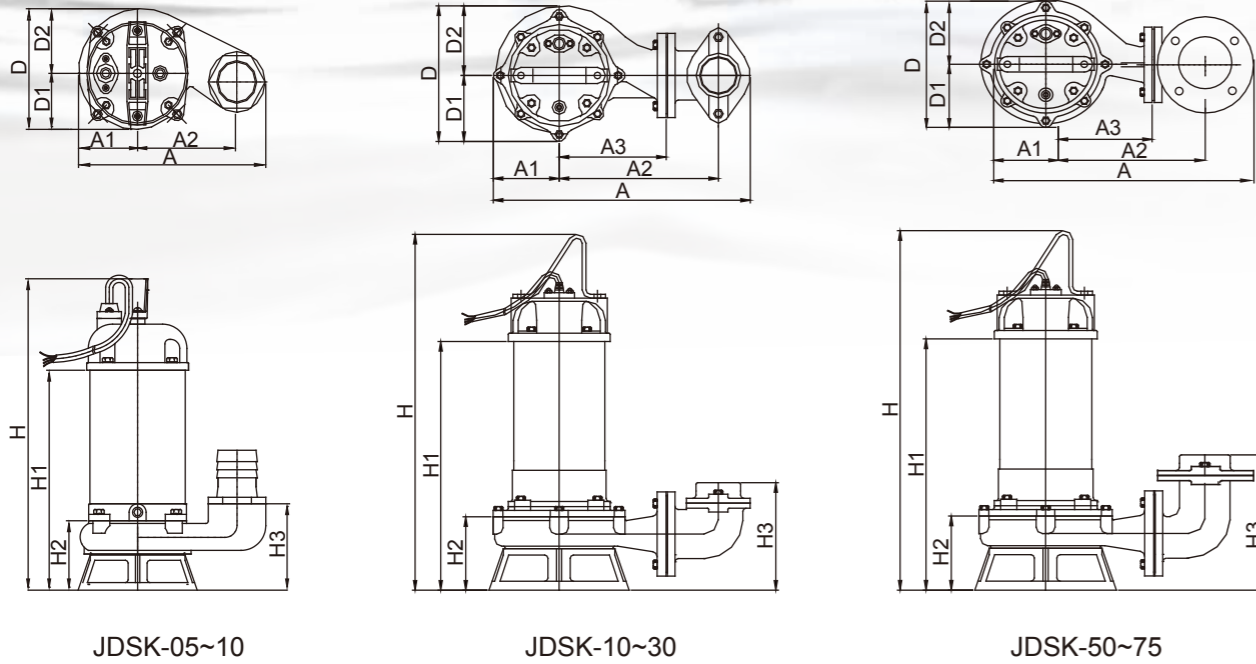


JDSK-Series Dimensions



Dimensions (mm)											
Type	A	A1	A2	A3	D	D1	D2	H	H1	H2	H3
JDSK-05	253	95	158	NA	190	95	95	410	285	106	126
JDSK-10	253	95	158	NA	190	95	95	480	333	106	126
* JDSK-10	265	95	199	115	190	95	95	402	290	104	164
JDSK-20	408	108	250	168	217	108	109	560	390	115	168
JDSK-30	408	108	250	168	217	108	109	580	410	115	168
JDSK-50	457	110	255	167	227	110	117	610	445	137	225
JDSK-75	457	110	255	167	227	110	117	650	485	137	225

» Note1 : Automatic models are available in single-phase versions(0.5~2HP).
 » Note2 : Q.D.C. (Quick Discharge Connection) is available only for Elbow type.
 » Note3 : *JDSK-10 is Elbow Type.



JDSK SERIES 60HZ

Submersible Cutter Sewage Pump



JDSK SERIES 60HZ

Submersible Cutter Sewage Pump

Feature

- / Tungsten inserts incorporated on the impeller blades to provide shredding action
- / Reliable shaft sealing provided by double mechanical seal in Si.Ca
- / Automatic operation (Optional)

Application

- / Drainage of sewage from building and school basement etc.
- / Septic tank and cesspit
- / Wastewater treatment
- / Ground water drainage

Specifications

Liquid Temperature	0~40°C (32~104°F)	
Submersible depth	10M	
Motor Part	Frequency	60HZ
	Pole	2 Pole
	Type	Dry Motor
	Insulation	Class E
Pump Part	Protection	IP 68
	Protector	Auto-cut
	Bearing	Ball Type
	Mechanical seal	Dual. Mechanical Seal
	Impeller	Semi-Open



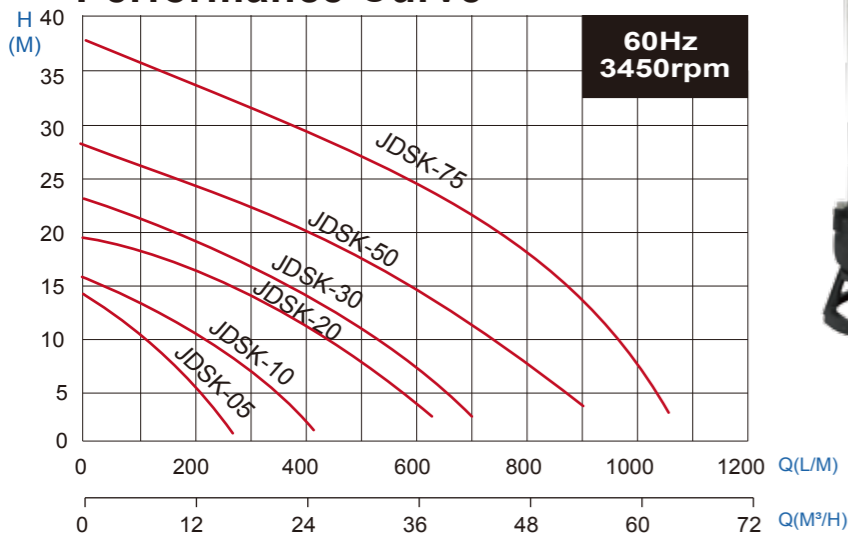
JDSK-05



JDSK-20



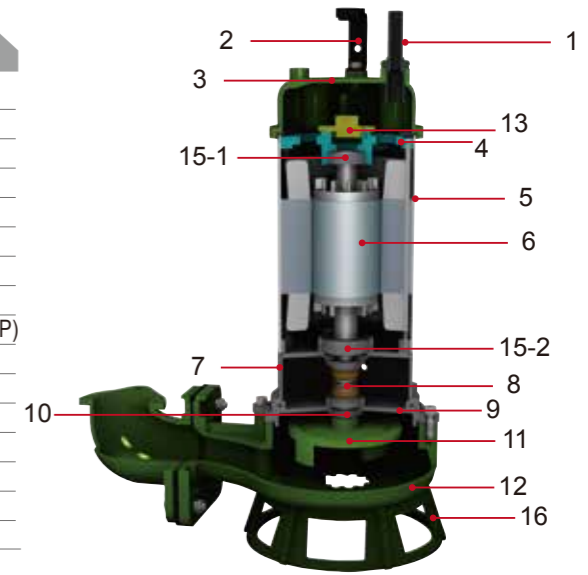
Performance Curve



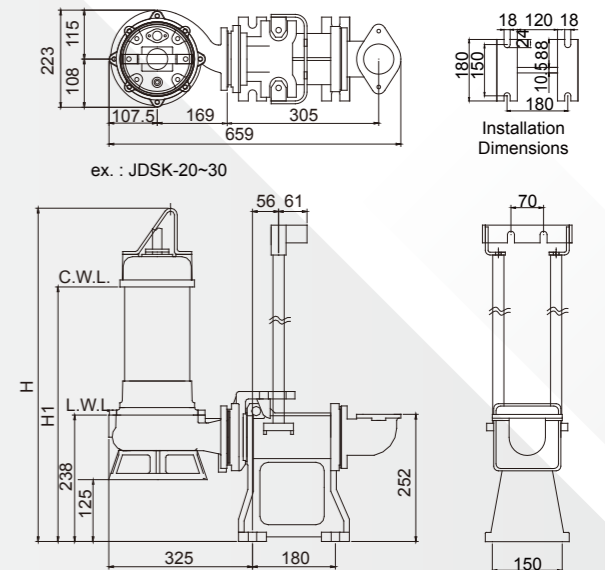
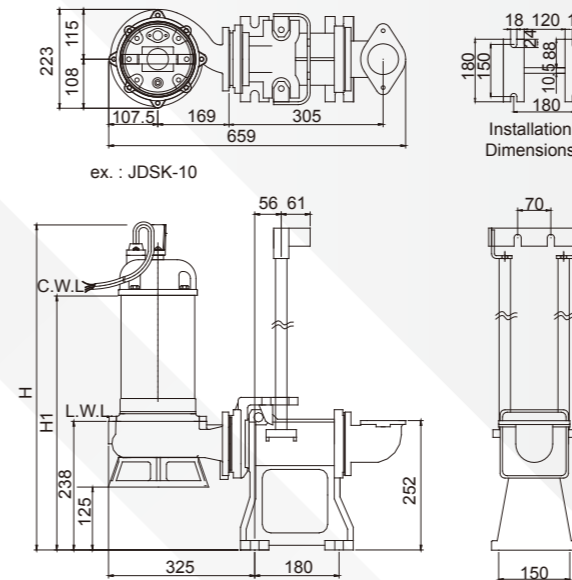
Cutter Impeller
(Tungsten Edge)

Parts and Material List

No	Part	Material
1	Cable	H07RN-F /SJTOW/STOW
2	Handle	Nylon 6/SS41
3	Motor Cover	Nylon 66/FC 200
4	Bracket	FC 200
5	Motor Housing	SUS 304
6	Shaft with Rotor	SUS 410
7	Oil Chamber	FC 200
8	Double Mech.Seal	Upper : CA / CE Lower : CA / CE(0.5~3HP);SIC / SIC(5~7.5HP)
9	Seal Housing	FC 200
10	Oil Seal	NBR
11	Impeller	FCD 450+Tungsten edge
12	Pump Casing	FC 200
13	Protector	KLIXON
15-1	Upper Bearing	NTN
15-2	Lower Bearing	NTN
16	Strainer	FCD-450



JDSK-Series with QM



JDSK with QM					
HP	KW	Discharge		Dimensions(mm)	
		Inch	mm	H	H1
1	0.75	2"(3")	50(80)	610	466
2	1.5	2"(3")	50(80)	695	525
3	2.2	2"(3")	50(80)	715	545
5	3.7	3"(4")	80(100)	765	587
7.5	5.5	3"(4")	80(100)	805	627

Data Chart

Type	Output		Discharge	F.L.A.		Rated	Maximum	Cable Free Passage	Weight	Q.D.C.			
	HP	KW		1ø 230V	3ø 460V						Head m	Cap. LPM	Head m
JDSK-05	0.5	0.37	2"	4	1	6	170	9.4	390	5	19	13.3	-
JDSK-10	1	0.75	2"	6	1.5	8	250	13.3	510	5	19	19	-
JDSK-20	2	1.5	2"(3")	12	3	10	380	17.3	640	5	23	36.5	QM-80
JDSK-30	3	2.2	2"(3")	-	4.3	13	500	22.3	812	5	23	37.6	QM-80
JDSK-50	5	3.7	3"(4")	-	7.5	19	500	28.3	990	10	28	58	QM-100
JDSK-75	7.5	5.5	3"(4")	-	10.5	23	650	38	1090	10	28	62	QM-100

- » JDSK-05 : Thread Type
- » JDSK-10 : Thread Type / Elbow Type (2" or 3" /Fit with Q.D.C. QM-80)
- » JDSK-20~30 : Elbow Type
- » JDSK-50~75 : Elbow Type